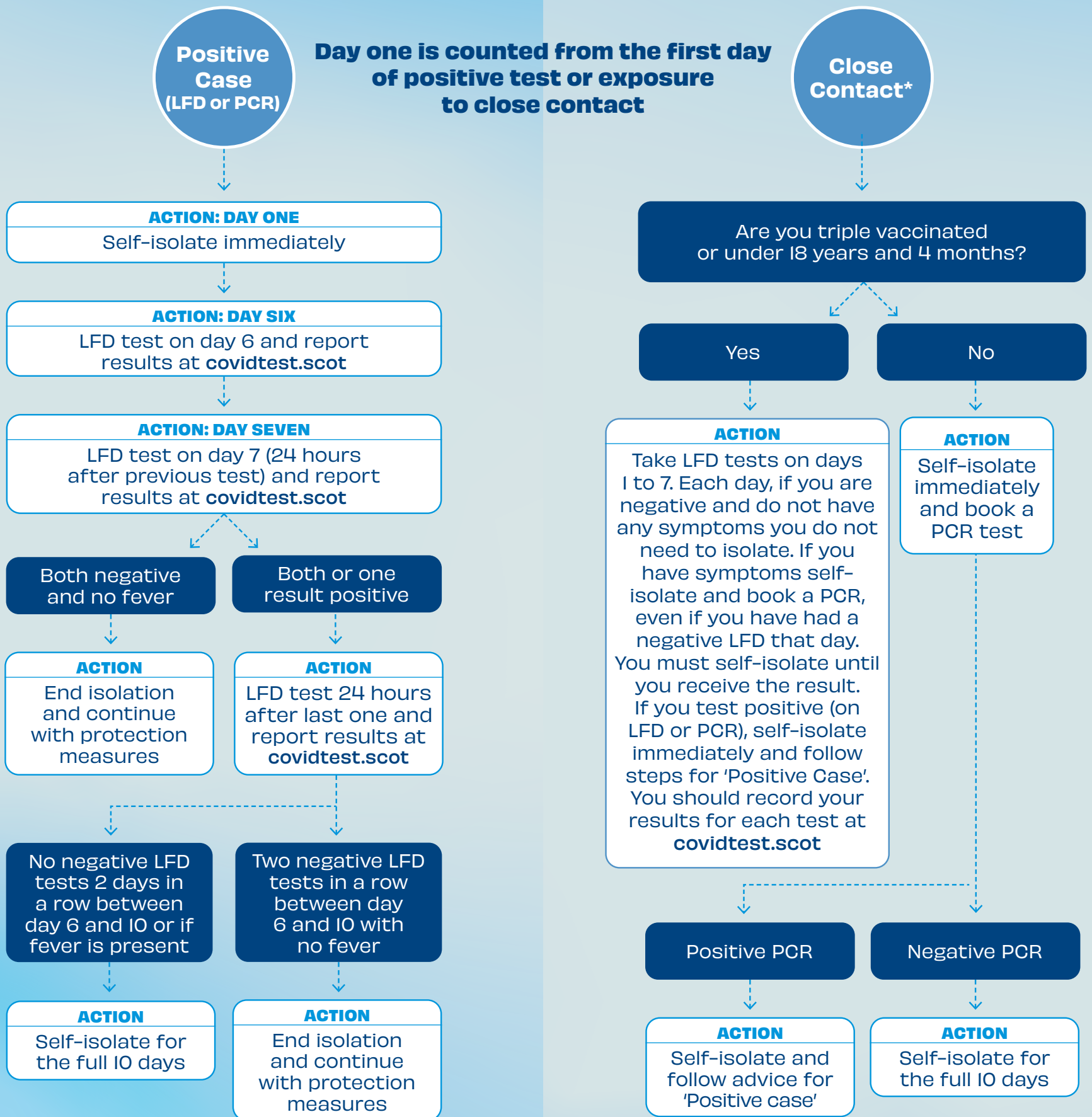




Living safely
this winter

Changes to Self-Isolation and Testing



Positive LFD tests no longer require a confirmatory PCR test. This applies regardless of vaccine status unless advised to or are applying for the self-isolation support grant.

Vaccinated close contacts are advised to seek PCR testing if they develop symptoms (even with a negative LFD test). Testing for close contacts under 5 is not compulsory but encouraged.

*Household and non-household

For more details visit NHSinform.scot/isolation

Being fully vaccinated reduces your risk of serious ill-health or hospitalisation from COVID-19 and time in self-isolation if you are a close contact. If you are not fully vaccinated visit NHSinform.scot or call **0800 030 8013** for details on how to get your first or next dose.

